



# 4-H News

Cooperative Extension Service

Todd County  
 240 Pond River Road  
 Elkton, KY 42220-0097  
 (270) 265-5659  
[www.ca.uky.edu/ces](http://www.ca.uky.edu/ces)  
[lmccuist@uky.edu](mailto:lmccuist@uky.edu)

**April 2024**

## 4-H Shooting Sports Starts Up May 2

The 4-H Shooting Sports season will start up on **May 2nd at 5:30 p.m.** at the Todd County Gun Club located at 520 Gun Club Road, Guthrie. (it's on the short cut road between Elkton and Trenton). The certified coaches will hold the safety meeting and shooting demonstrations at their ranges, paperwork can be completed and all firearms and ammunition will be inspected. Shooters should bring ear and eye protection and ammunition for their firearm. If you are new to this club

and don't know what to bring, just attend the meeting and you'll receive all the information needed. This club is for 9 year olds (as of Jan. 1) through 18 year olds. Practices will be held every Thursday at 5:30 p.m., starting May 2 through the first week of September. (State shoot is Sept. 7-8). If you have questions about this program, attend our "Kick-Off" meeting on May 2nd to get the scoop and get involved in this great 4-H Club!



### 4-H Fair!

Have you made a craft, wood-work or taken cool pictures this year? Check out the 4-H Fair Information and get rewarded for your handy work!

### Inside this issue...

- 4-H Teen News
- 4-H Fair Projects
- 4-H Cloverbuds
- 4-H Camp
- Teen Council
- Teen Conference
- 4-H Speeches & Demonstrations
- 4-H Troupe
- And much more...

## Want to Show a Goat?

Did you read that right? Yes you did! Any 4-H age youth interested should plan to attend an information meeting on how to get involved in showing goats and even lambs this summer. Come on out **Tuesday, April 16th at 7 p.m.** for an informational

meeting. You don't have to own your own goat, we have some club goats and lambs that you can show as long as you're willing to attend some meetings and work with the goats/lambs this spring and summer.



## County 4-H Talk Meet & Area 4-H Communications Events

The County 4-H Talk Meet & Demonstration Contest is set for **Thursday, April 18th** at Elkton Baptist Church during the school day. **The deadline to sign up to talk is April 9th**, so if you had plans to do a speech or demo be sure to e-mail [lmccuist@uky.edu](mailto:lmccuist@uky.edu) and include your name, title of presentation and birthdate. The 4-H members who win the county contest in their age or division will move on to the

Area 4-H Communications Contest on Thursday, May 9th in Hopkins County. Also, anyone presenting a speech or demo will receive a 4-H "Talk Meet" t-shirt and will be eligible for awards! Don't forget—Demonstrations need to have 3 posters along with props in your presentation! Speeches are prop-less!

**Talk it up!**

# 2023 Contest!



## Teen Council

The 4-H Teen Council is for any youth between the 8th - 12th grade. Teens in 9th - 12th grade may volunteer as a teen camp counselor at 4-H camp, but must have attended a teen council meeting within the year to qualify. Our last meeting is **Friday, April 19th** at the 4-H Office from 3:15—4 p.m. See ya there!



## Teen Conference

Attention 8th—12th graders! The 4-H Teen Conference is **June 11-14 on UK's campus**. Paperwork and forms for this conference are available from the 4-H office now. This conference is an outstanding leadership opportunity full of fun, educational and hands-on workshops, energetic assemblies, a 4-H Prom and so much more! The conference fee is \$250 for the 4 day event. Forms are due no later than **May 14th to the 4-H office!**



## Summer 4-H Camp

Summer 4-H camp is set for **July 15th—19th, 2024**. Camp forms were handed out at the schools in March to all 4th and 5th graders and are available in the cafeteria at TCMS for 6th - 8th graders! Camp forms along with a \$50 downpayment are due to the 4-H office by **May 22nd**. Once you pre-register, you'll receive another packet of forms and information about camp. These forms and final payments are due back to the 4-H Office by June 21st. If you are a teen between 9th - 12th grade, you can apply to attend camp as a teen camp counselor, but must be a member of the 4-H Teen Council to be eligible. Adults (over 18) interested in attending, must fill out a volunteer application and have a background check run. Hope to see you at 4-H Camp this summer!



# Enter Your 4-H Work in the Fair!

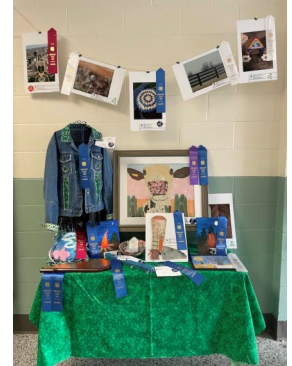


Don't forget that you can exhibit 4-H projects in the county 4-H fair this year! The 4-H fair is set for July 30-Aug. 1. You can bring your projects to the Extension Office on **Tuesday, July 30th** to place on exhibit and receive premium money for your hard work. The 4-H Fair will accept any entries that fall into the State Fair 4-H categories. These projects must be work that you have completed during

the 2023-2024 4-H/school year. You can enter art work, wood work, foods, sewing projects, folk art, leather crafts, geology collections, insect collections, photography, crafts and much more. The Kentucky State Fair is August 15th—25th this year. TC 4-H will send the winning projects from the county to the state fair. Check out the fair catalog at the following link...

<http://4-h.ca.uky.edu/content/state-fair-catalog>

Some of the more popular projects are included in this newsletter! Check them out and get started!



## 4-H Cloverbud Camp

The West Kentucky 4-H Camp offers a 4-H Cloverbud Camp for **5–8 year olds** and their parent(s) to attend full of canoeing, crafts, fishing low ropes challenges, recreation and swimming. This exciting weekend is set for **June 21-23** in Dawson Springs, KY. Adults must have a background check run through the Todd County Extension Service and attend with their child. Applications are available from the 4-H office and are due by May 8th. The cost to attend is \$160 per Cloverbud and \$150 for each parent/adult. Join this fun adventure!



## W3 & W4 Area Teens

The W3 & W4 Area Teens are taking a trip to Holiday World on May 28 - 29! Registration for this trip is due by May 3rd to the 4-H office. Teens between 7th - 12th grade must have attended at least one area 4-H teen meeting this year to be eligible to attend this "rewards" trip. The cost to attend is \$75.00.

Get involved in a 4-H club that interests you and start working on a fair item to submit!

Happy Spring!



Sincerely,

*Lee Ann McCuiston*

Lee Ann McCuiston  
County Extension Agent  
For 4-H Youth Development

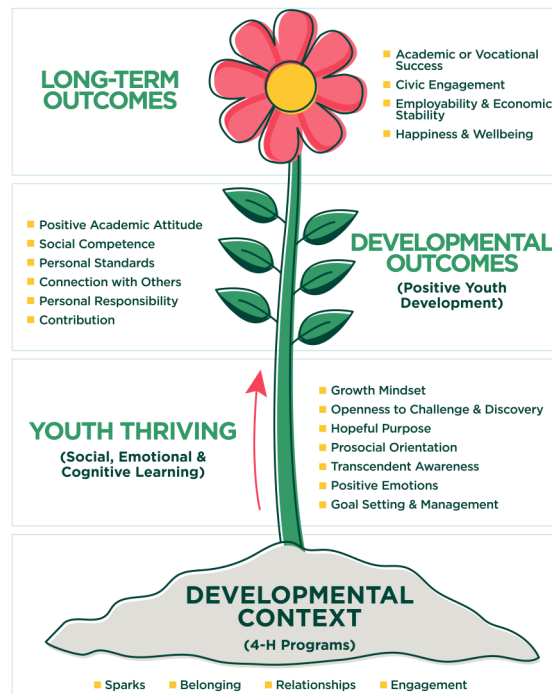


# April Calendar

- April 1-5 Spring Break
- April 8 4-H Performing Arts Club - 3-4:30 p.m.
- April 11 Area 4-H Teen Outing - "The Amish Experience & City Forum"
- April 15 4-H Performing Arts Club - 3-4:30 p.m.
- April 16 4-H/FCS Homeschool Club—9-11 a.m.
- April 16 4-H Cloverbud Club Mtg. —3:15-4:30 p.m.
- April 16 4-H Goat/Sheep Show Interest Mtg. 7 p.m.
- April 18 4-H Talk Meet - 11 a.m.—3 p.m. Elkton Baptist
- April 19 4-H Teen Council Mtg. 3:15 - 4 p.m.
- April 22 4-H Performing Arts Club - 3-4:30 p.m.
- April 23 Night of the Arts - TCCHS (4-H Performing Arts to Perform)
- April 29 4-H Performing Arts Club - 3-4:30 p.m.
- April 30 4-H/YSC Reality Store
- May 2 4-H Shooting Sports Kick Off Information Mtg. - Gun Club @ 5:30 p.m.
- May 3 Area Teen Holiday World Trip Due!
- May 6 4-H Performing Arts Club - 3-4:30 p.m.
- May 9 Area 4-H Communications Event—Hopkins County - 6 p.m.
- May 13 4-H Performing Arts Troupe Performance at North & South
- May 14 Teen Conference forms & fees due!

## The 4-H Thrive Model

Ever wonder what getting involved in 4-H does for a child/youth? This model is our 4-H Thrive Model. The 4-H program is the soil (see bottom). When we pour into our child/youth—they begin to grow and thrive (the stem); they begin to show developmental outcomes (the leaves) and finally—they become a productive citizen (the flower) - achieving academic & vocational success, giving back to their community, living a happy, healthy life!





# The 4-H Fair

## 4-H Project Ideas

**Each Exhibitor may enter only two (2) classes in Section A and only 2 classes in section B for a maximum of 4 entries in the arts division per 4-H'er. All items must have been made since the last State Fair. Pictures should be framed and ready for hanging. Drawings and paintings must be framed. Plexiglas is preferred over glass.**

### SECTION A - Arts

**Painting** a = junior level 4-H'er (9-14 years) b = senior level (15-18 years)

727ab. **Acrylic:** (pg.12) Using acrylic paint to create a painting.

728ab. **Water Color:** (pg.14) Using watercolors and a variety of techniques to complete a painting on watercolor paper.

729ab. **Abstract:** (pg.18) Using acrylic paints experiment with abstract designs to complete a painting.

730ab. **Sand Painting:** (pg.20) On an 8"x10" x1/4" sanded plywood or particle board. Explore painting with colored sand mixed with glue.

731ab **Self Portrait:** (pg.22) Using acrylic or watercolor paints. Complete a self- portrait using any drawing or painting technique.

732ab **Human Action:** (pg.24) Using acrylic or watercolor paints, capture human action through the use of vivid colors, lines, and texture when painting.

733ab **Oil Painting:** (pg.26) Using oils on canvas or canvas board. Experiment with different techniques of laying oil to canvas to create a finished painting.

734a. **Oil Pastel:** Using oil pastels on canvas or canvas board. Create a finished work of art.

### SECTION B

#### Drawing

745ab Junior Black Pencil Drawing (pg.12) Drawing using a black pencil.

746ab. **Two Point Perspective:** (pg. 16) On sketch paper, draw a two point perspective that has a point at each end of a horizontal segment.

747ab. **Circular Shape Object:** (pg.18) Draw a subject to fit a circular shape.

748ab. **Color Pencil:** (pg.20) Draw with colored pencils and use turpenoid to blend the colors.

749ab. **Pen and Ink:** (pg.22) Sketch animals or other objects using pen and ink.

750ab **Junior Hand Lettering (Calligraphy):** (pg. 24) On 8 ½ by 11 paper, rewrite a quote, poem or pledge using Calligraphy. Make sure to include the author on the piece.

751ab Cartooning: (pg.27) Cartooning is a simple process of making line drawings show sequential motion. Create your own cartoon character showing motion. Must create at least three blocks.

#### Sculpting

757ab **Clay Container:** (pg.55) Create a functional container from clay either self-hardening or firing required.

758ab. **Clay Bust:** (pg.57) Sculpt a head with facial features out of clay.

759ab **Mask:** (pg.61) Create a mask using clay emphasizing unique form and texture to portray feelings.

760ab. **Cardboard Sculpture:** (pg.65) Create a piece of textured relief sculpture using corrugated cardboard stacked and glued together. Sculpt with an Exacto® knife

761ab. **Wire Sculpture:** (pg.67) Using wire and nylon cloth create a freestanding flower sculpture.

762ab. **Plaster of Paris Carving:** (pg.69) Using a plaster of paris block, carve a form that has a concave and convex surface and allows space to flow around and through it.

## **Section C: Art Trends and Traditions**

This section will be highlighting the latest trends in art while honoring our heritage. Art trends will be selected every two years. Heritage arts will have specific areas as well as an “Other” category where youth may choose what they exhibit. Documentation for the Heritage Arts Classes is REQUIRED. If required documentation is not attached the item will be disqualified. You may enter two entries per year in this section.

### **Trends**

763ab **Art Trends – Mixed Media Canvas.** Mixed media is defined employing more than one medium. Examples include decoupage and paint; pencil and water colors; fabric, paint and paper. Canvas size is open to artist.

763c **Basket Making** – *natural materials, any size, shape or design. Non-natural materials may be woven into design.*

763e. **Jewelry** – *one piece of jewelry created by youth (jewelry quality only). No kits or pony beads allowed.*

763g. **Leather craft** – *item made from leather. May or may not be tooled. Kits allowed.*

### **Heritage Arts**

764ab **Heritage Arts** -According to various sources, heritage can refer to practices or characteristics that are passed down through the years, from one generation to the next. Kentucky 4-H believes in celebrating one’s heritage through recognition of art that may be representative of one’s culture Examples may be baskets, brooms, wood carvings, metal art, mini barn quilts etc.

## **Home Environment - Unit I EXHIBITS from Exploring Your Home project book- Div. 6039**

**887 Color Collage** (pp. 10, activity 3): A collage of color created by the member to depict colors liked by the member. A collage is made up of a collection of objects (such as paper, fabric, wrapping paper, wallpaper, carpet, or other materials) artistically arranged and adhered to a mat board or foam core board.

**888 Texture Collage** (pp. 10, see activities 1 & 2): A collection of textured items or rubbings of textured items artistically arranged and adhered to mat board or foam core board.

**889 Transparent finish applied to small wood object** (pp. 16): Apply a clear finish such as tung oil, penetrating seal or polyurethane which does not include stain to a small wood object such as a bowl, tray, board game or box. A transparent finish allows the wood grain to show through. Judging emphasis will be on how well the object is prepared for the finish and how well the finish has been applied, not the construction of the wood object. The wood object may be made by the member, made by someone else, purchased or found. Items that are stained or finished with paint do not fit in this class.

**890 Simple cloth item for the home** (Sewing machine may be used but is not required): Examples: decorative pillow, tablecloth, laundry bag, place mats; footstool with a seat made of woven fabric; fabric applied to an item such as a box, plate, or lampshade. Unacceptable: purses, tote bags, backpacks, duffle bags.

**891 Wastebasket** (pp. 14) decorated by member

**892 Crate Bookshelf** (p, 14) designed and created by member

**893 Bulletin board** (If it is to be hung on a wall, it must be ready to hang with appropriate hardware attached.)

## **Home Environment - Unit II EXHIBITS from Living with Others project book**

**894 Decorative item for the home & photo:** decorative item created by the member as part of a 4-H Home Environment Project. Include a photo showing how the item fits into the home’s décor.

**895 Simple wood item refinished by the 4-H member:** Item should have straight lines with no elaborate carvings or turnings. (The idea is to learn how to apply a new finish such as paint, stain, varnish, polyurethane, etc. to a simple wooden furnishing that’s already in use.) Documentation is to include a “before” photo with explanation of how the item was refinished must be securely attached. Examples: refinished footstool, children’s furniture, small box, tray, picture frame, bookshelves, and plant stand.



Educational programs of Kentucky Cooperative Extension serve all people regardless of race, color, age, sex, religion, disability, or national origin. University of Kentucky, Kentucky State University, U.S. Department of Agriculture, and Kentucky Counties, Cooperating. Disabilities accommodated with prior notification.

**896 Cloth item for the home created using a sewing machine** Examples: hemmed tablecloth or table runner, wall hanging, pillow, pillow case, throw, embellished towels, shower curtain, chair cover, laundry bag, pet bed, valence, and curtains. Unacceptable: purses, tote bags, backpacks, duffle bags.

**897 Invitation and thank you letter/note:** Design an invitation and thank you letter/note for a sleepover, birthday party or other occasion of your choice. (p. 6-7) Cards/letters may be created with computer software or handwritten. Decorations on the cards/letters may be member's original artwork, computer generated art, purchased or found decorative items. The message written in the card or letter is more important than the decorations. Write your name and county on the back of each card/letter and place each card/letter in a plastic sheet protector. (For the fair, it is best to use a fictitious address and contact information on the invitation or thank you.) Envelopes are not required for exhibit.

### **Unit III EXHIBITS from Where I Live project book.**

**898 Accessory for the home created by the 4-H member:** This exhibit is to be made up of two parts: 1) the accessory and 2) a sheet or folder of documentation. Examples: stitchery or appliqué wall hanging, latch hook items, pillow with applied design (stitchery, appliqué or other media), rug, picture in appropriate frame and ready to hang.

**899 Individual place (table) setting:** This exhibit is to be made up of two parts: 1) one individual place setting appropriate to a theme or event chosen by the 4-H member and 2) a color photo or diagram of the place setting showing how it should be arranged. Include plate, beverage container(s), placemat, and napkin. Additional decorative item(s) are optional. All items that make up the place setting are to fit on the surface of the placemat. Flatware (knife, fork and spoon) must be included in the photo/diagram showing how all the items are arranged, but do NOT send flatware to the state fair. To insure that all pieces get returned to the member, write the name and county of the exhibitor on tape and place it on every part of the table setting in a location hidden to the public when exhibited at the fair.

**900 Piece of furniture refinished (stripped, sanded, and painted or stained/sealed)** by the 4-H member. This exhibit is to be made up of two parts: 1) the furniture and 2) Documentation is to include a "before" photo with explanation of how the item was refinished must be securely attached. Examples: rocker, table, chair or chest.

**901 Old or discarded item made useful in a new way as a home accessory:** This exhibit is to be made up of two parts: 1) the accessory and 2) a sheet or folder of documentation. Documentation is to include a "before" photo; an explanation of how the item was made useful again in a new way; materials used, cost and time involved in project. Examples: old silverware flattened and made into wind chimes; scrap wood pieces made into wall art; old lace doily attached to a pillow or framed; old tool box cleaned up and made into a TV stand.

**Photography Projects** - a 4-H'er can enter only 6 classes within one level per year. Horticulture photography: a 4-H'er may enter any of the classes in addition to general photography. See the Kentucky State Fair 4-H Catalog for full details on mounting instructions and sizes on Kentucky 4-H Website.

### **Natural Resources**

764a Forest – Photograph showing Forest (large area dominated by trees) and/or Forestry Activities

764b Water – Photograph showing still or moving natural water system or water activity

764c Wildlife – Photograph showing unrestrained and live wildlife in natural habitat; Domestic animals are not permitted

764d Natural Scenic – Photograph showing natural scene [manmade object not as subject of photograph

764e Native Plants – 1 – 5 Photograph(s) of Kentucky Native Flora in natural area [not garden] - a plant that occurs naturally in the place where it evolved.

764f Insect – Photograph of insect(s) unrestrained and live in natural habitat



Educational programs of Kentucky Cooperative Extension serve all people regardless of race, color, age, sex, religion, disability, or national origin. University of Kentucky, Kentucky State University, U.S. Department of Agriculture, and Kentucky Counties, Cooperating. Disabilities accommodated with prior notification.

## **Agriculture**

- 765a Livestock – Photograph uses livestock as the main subject.
- 765b Crops – Photograph uses crops as main focus.
- 765c Life Cycle – 1-5 photograph(s) clearly showing life-cycle as part of the story, crops or livestock.
- 765d Agriculture Scenic – Landscape photograph with agriculture as the main focus.
- 765e Farm Equipment/Implement – Photograph with agriculture equipment/implement as main subject.
- 765f Modern or Historic Practices – 1-5 photograph(s) showing a singular, comparison, or advancement in an agriculture practice.

## **Leadership**

- 766a Formal/Candid Portrait – Photograph that shows a person as the main subject. [A formal portrait is not a snapshot but a carefully arranged pose under effective lighting conditions and a candid photograph is a photograph captured without creating a posed appearance.]
- 766b Urban Scenic – Landscape Photograph showing an Urban setting as the main subject.
- 766c Event – 1-5 Photograph(s) that are focused on a community event.
- 766d Service – Photograph that displays service learning (community service) as the main subject.
- 766e 4-H Event – 1-5 Photograph(s) that cover a 4-H event you attended.
- 766f National/International – 1-5 Photograph(s) that focus on a National or International experience.

## **FCS**

- 767a Family – Portrait or Candid Photograph of family members or event
- 767b Food Preparation – 1 – 5 Photograph(s) showing meal or single food item preparation
- 767c Culture – Photograph showing unique perspective of local or global culture
- 767d Fashion Portrait – Portrait Photograph with modeled fashion as the primary subject
- 767e Patterns/Design – Photograph Showing Natural or Manmade Pattern / Design
- 767f Residential – 1 – 5 Photograph(s) showing residence or residential area from inside and outside.

## **SET**

- 768a Mechanics – 1 – 5 Photograph(s) showing the applied concept of force and energy.
- 768b Architecture – Photograph showing the product of planning, designing, and constructing buildings or any other structures.
- 768c Energy – Showing the creation or expulsion of energy
- 768d Movement – 1 – 5 Photograph(s) of object showing movement [manmade]
- 768e Construction – 1 – 5 Photograph(s) showing the steps of construction for any built structure
- 768f Machinery/Equipment – Photograph showing machinery or equipment used in construction, engineering, or repair.

## **Health**

- 769a Physical Activity – Photograph that shows physical activity as the main subject.
- 769b Competitive Sports – Photograph that shows a sport as the main subject.
- 769c Healthy Lifestyle – Photograph that expresses healthy lifestyles as the main subject.
- 769d Healthy Foods – 1-5 Photographs focused on healthy food or meal choices.
- 769e Careers in Health – 1-5 Photographs that focus on Careers in the health and service fields as the main focus (ex. Fire, law, medicine, emergency, education).
- 769f Dealing with Stress – Photograph that illustrates a hobby or interest that helps an individual reduce stress.

## **Communications/Expressive Arts**

- 770a Music – Photograph showing music (written or performed)
- 770b Instrument/Art Utensils – Still life photograph using musical instruments or art equipment as primary subject
- 770c Cultural Arts Event – 1 – 5 Photograph(s) showing attended cultural arts event (Art Show, Musical Performance, etc.)
- 770d Arts Creation – 1 – 5 Photograph(s) with the design, construction, and/or creation of art as the



Educational programs of Kentucky Cooperative Extension serve all people regardless of race, color, age, sex, religion, disability, or national origin. University of Kentucky, Kentucky State University, U.S. Department of Agriculture, and Kentucky Counties, Cooperating. Disabilities accommodated with prior notification.



primary subject

770e Created Art in Your Community – 1 – 5 Photographs showing local art in your county.

770f Word(s) – Single word spelled out using built or natural environment or words within the community with personal significance or meaning.

### **HORTICULTURAL PHOTOGRAPHY CLASSES**

771 Single black and white. Horticultural subject or activity. (Maximum size: 8" x 12")

772 Single color. Horticultural subject or activity. (Maximum size: 8" x 12")

773 Sequence of 4 photographs. B&W or Color representing a horticultural event or activity that tells a visual story, chronologically, without the use of words.

774 Horticulture collection (B&W or color), consisting of 6 photographs.

## **Division 6042- Kentucky 4-H Trends**

### **Clover Photography**

1. Exhibit is limited to a single photograph.
2. Subject of photograph must include 4-leaf clover. (Photographs of 3-leaf clovers will NOT be accepted.)
3. 4-leaf clover may be real or created.
4. Photograph may be color or black and white.
5. Follow all mounting rules described in the Cloverville Photography division.
6. Maximum photograph size 8" X 12".
7. The 4-H identification tag should be located in the bottom right hand corner.

### **1010/1011 Junior/Senior Clover Photograph**

### **Upcycling Project**

Upcycling is taking something that you are throwing away and making it into something that maintains or improves the quality of the materials. Example: There are coin purses made from sweaters, earrings cut out of vinyl records and an old travel case made into a clock. The designs will be judged on quality, use, and creativity. Entries are limited to one entry per class per county.

### **1050/1051 Junior/Senior Upcycling Project**

### **4-H Cake Decorating**

1. Entry consists of a decorated (Styrofoam) cake.
2. Styrofoam MUST be the base for the decorating. Real cakes will NOT be accepted.
3. Judging is based on decoration only not taste.
4. Exhibit is not limited to a color or design.
5. Refrigeration will NOT be provided.
6. Exhibit must be limited in size to no taller than 24" and no more than ½ sheet board.
7. Cakes may be returned, based on the condition at the end of the fair.
8. 4-H identification cards must be attached to bottom right hand corner of sheet board.

**1060 -1061** Junior/Sr. 4-H Cake Decorating (Cake must include the 4-H Clover either in design or decoration)

**1062/1063** Junior/Senior- General Cake Decorating

**1070/1071** – Jr./Sr. 4-H Cup Cake Decorating (two cupcakes)

**1072/1073** – Jr./Sr. Cup Cake Decorating (two cupcakes)

### **Non Traditional Needlework**

Loom knitting

**1074/1075** – Junior/Senior loom knitting

Arm knitting

**1076/1077** – Junior/Senior arm knitting



Educational programs of Kentucky Cooperative Extension serve all people regardless of race, color, age, sex, religion, disability, or national origin. University of Kentucky, Kentucky State University, U.S. Department of Agriculture, and Kentucky Counties, Cooperating. Disabilities accommodated with prior notification.